

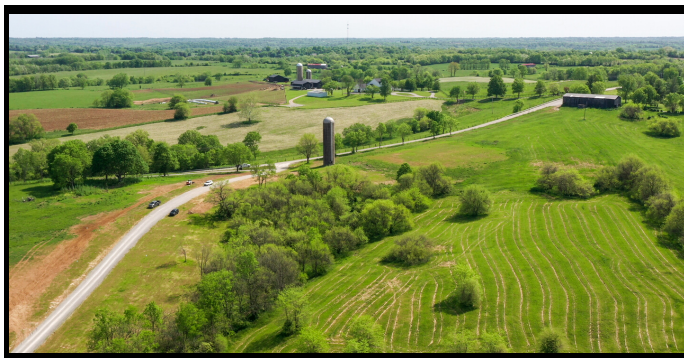


# Beautiful Lots FOR SALE

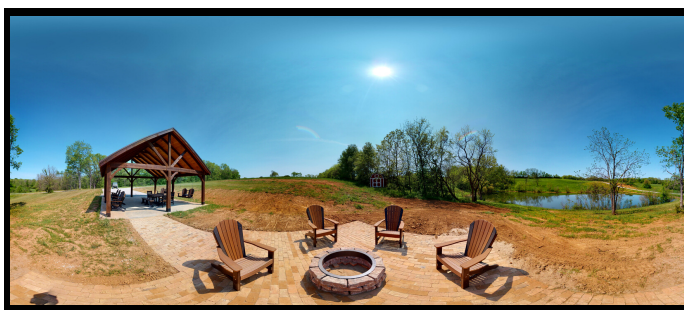
## Property Features

- 37 acres of community common area: lush forest and meadow full of wildlife that runs along Mill Creek, a picturesque and clean, babbling old Kentucky creek suitable for kayaking, canoeing, tubing, and wading
- A 1 acre+ fishing pond fully stocked with largemouth bass, bluegill, and crappie
- An Amish-built pavilion overlooking the fishing pond and sunsets with two double hanging porch swings, dining table, and chairs as well as picnic seating, Adirondack, and rocking chairs for relaxing and conversation
- A brick fire pit and patio outside of the pavilion, encircled by Adirondack chairs
- Community storage shed next to the pond for fishing poles, kayaks, furniture, etc.
- A trail to Mill Creek from the pavilion area for launching boats
- A charming silo at the neighborhood entrance, preserved to landmark the property's heritage as a bustling dairy and farm

Luxury large lot development 10-20 minutes from Cynthiana and Toyota/ Georgetown



Building and farm lots  
2-40 acres, starting at \$50,000



Located at the intersection of KY HWY 356/ White Oak Rd. and Ammerman Pike, Harrison County, KY



**MILL CREEK**  
— MEADOWS —

*a creekside community*



Welcome to *Mill Creek Meadows*, a spectacular property located in the heart of Kentucky Bluegrass Country. Big Pine Land has put in place several unique amenities for the use of residents, all of which will be maintained by the HOA, so you don't have to!



Call, email, or text for information  
or a tour

RITA JONES  
KELLER WILLIAMS  
GREATER LEXINGTON  
ritajones722@gmail.com

(859) 533-7228

TAMMY TRAYLOR  
CARR REALTY  
& AUCTION  
tammyjoetraylor@gmail.com

(859) 229-4927

BRIAN FURNISH  
CARR REALTY &  
AUCTION

(859) 298-0465

Please visit <https://www.bigpineland.com/>  
For more information, property photos, and current listings.  
Thank You!

